



MARCH 2026

LIVELIHOOD RESTORATION PLAN (LRP)

DERA ISMAIL KHAN, KHYBER PAKHTUNKHWA

Activity 1.1.2

**SUB-ACTIVITIES 1.1.2.1, 1.1.2.2 AND 1.1.2.3:
RESTORATION OF BADRI POND THROUGH FLOW PATH
REHABILITATION,
DE-SILTATION, AND EMBANKMENT STRENGTHENING**

RECHARGE PAKISTAN



FP207 RECHARGE PAKISTAN: BUILDING PAKISTAN'S RESILIENCE TO CLIMATE CHANGE THROUGH ECOSYSTEM-BASED ADAPTATION (EBA) AND GREEN INFRASTRUCTURE FOR INTEGRATED FLOOD RISK MANAGEMENT

Table of Content

List of Abbreviations:-----	3
Executive Summary-----	4
Introduction-----	4
Aims and Objectives-----	4
Background to the Detailed LRP-----	4
Description - Activity 1.1.2-----	4
Proposed and Agreed-Upon Activities & Mitigation Measures-----	4
Documentation of Consultations, Community Input, and Consent-----	5
Timetable for Stakeholder Engagement’s Activities during Planning & Construction Phase-----	6
Meeting with Community Members – Badri Site LRP & Risk Management Plan-----	8

List of Abbreviations:

Abbreviation	Full Form
CBOs	Community-Based Organizations
ESSF	Environmental and Social Safeguards Framework
LRP	Livelihood Restoration Plan
NbS Team	Nature-based Solutions Team
SM Team	Social Mobilization Team
ToP	Terms of Partnership

Executive Summary

This Livelihood Restoration Plan (LRP) has been developed as a proactive response to the environmental and social screening of Sub-Activities 1.1.2.1, 1.1.2.2 and 1.1.2.3: the rehabilitation of Badri Pond through desilting, embankment strengthening, and excavation of flow paths. Since Badri Pond serves as the only water source for the residents and livestock of Burzwali Village, the LRP aims to ensure uninterrupted water access during the construction period scheduled for May 2026 to December 2026. Instead of relying on monetary compensation, the plan introduces practical, community-endorsed mitigation measures such as phased de-siltation, pond division through a protective bund, inlet flow management, and emergency water supply arrangements. Developed in consultation with community members, the Irrigation Department, and WWF-Pakistan, the plan emphasizes participatory decision-making and formal documentation of consent, ensuring minimal disruption to livelihoods, and strengthening community trust in the project.

Introduction

The Livelihood Restoration Plan (LRP) has been developed as a direct outcome of environmental and social screening. This plan specifically addresses the potential temporary impacts on community livelihoods during the implementation phase of the activity. Sub-Activities 1.1.2.1, 1.1.2.2 and 1.1.2.3 are designed to enhance water recharge infrastructure; however, during its execution, there may be disruptions to the water access for the local population and livestock in Burzwali Village. The LRP outlines targeted mitigation measures to ensure that the community's access to water remains uninterrupted and that no adverse effects are experienced by residents or their means of livelihood.

Aims and Objectives

The objective of this Livelihood Restoration Plan is to ensure continued and uninterrupted water access for the communities of Burzwali Village (human and livestock) during the implementation, without relying on monetary compensation.

Background to the Detailed LRP

The rehabilitation activities at Badri Pond, specifically desiltation and embankment construction may temporarily restrict community access near the pond inlet, creating short-term challenges for local households and livestock that rely on the pond as a primary water source.

Description- Activity 1.1.2

Sub-Activities 1.1.2.1, 1.1.2.2 and 1.1.2.3 involve the rehabilitation of 415 meters of flow paths, including the construction of five check dams to reduce water flow velocity, the desiltation of one hectare of pond area, and the strengthening and reinforcement of 211 meters of embankments.

The primary challenge is ensuring uninterrupted access to water for local communities and livestock, as the pond serves as their sole water source. Implementation is scheduled for July to December 2026.

Proposed and Agreed-Upon Activities & Mitigation Measures

To prevent adverse impacts on local livelihoods, the following mitigation measures have been jointly agreed upon by the community, the Irrigation Department, and WWF-Pakistan:

- **Phased De-siltation:** De-siltation activities will be implemented in phases to ensure effective construction management while minimizing disruption to community water access.
- **Inlet Flow Management:** Incoming water flow will be redirected to a lower section of the pond to capture runoff effectively without interfering with community use.
- **Emergency Water Supply:** In the event of emergency water requirements, water will be mechanically transferred to adjacent existing storage tanks to maintain supply.

Documentation of Consultations, Community Input, and Consent

All consultations related to proposed alternatives and mitigation measures have been conducted and documented to ensure transparency, accountability, and community ownership. This documentation includes:

- **Meeting Minutes:** Detailed records of all community meetings and individual consultations (where applicable) in which water access alternatives were discussed. These records capture participant details (disaggregated by gender where possible), key concerns raised, proposed solutions, and final decisions.
- **Community Input Records:** Feedback and recommendations from community members regarding the feasibility, practicality, and cultural appropriateness of the proposed measure have been systematically documented. This includes community-suggested modifications or additional measures to ensure uninterrupted water access.
- **Consent Records:** Formal consent for the adopted alternatives and mitigation measures has been obtained. This includes:
 - **Signed "Approval & Consent Form" for CBOs:** These forms clearly outline agreed-upon water access alternatives and mitigation measures, supported by signatures or thumb impressions from CBO leadership and representative community members to demonstrate their support.
 - **Signed "Approval & Consent Form" for Individuals:** Where specific households or disproportionately affected users are concerned, individual consent forms have been obtained to confirm understanding and agreement to the proposed solutions.
- **Pictorial Evidence:** Where culturally appropriate and with prior informed consent, photographs of consultation sessions have been captured as supplementary evidence of community engagement and agreement.
- **Inclusion in Terms of Partnership (ToP):** The agreed-upon water access strategies have been formally incorporated into the Terms of Partnership agreements with relevant CBOs, clearly defining the roles and responsibilities of all stakeholders in implementation and monitoring.

This comprehensive process is designed to ensure that rehabilitation activities at Badri Pond proceed with minimal disruption to essential community water access while strengthening trust, collaboration, and local ownership throughout implementation.

Timetable for Stakeholder Engagement’s Activities during Planning & Construction Phase

The implementation of stakeholder engagement during the planning and construction phase will be integrated into the overall project schedule for Activity 1.1.2. The following is an indicative timetable:

Sector	Activities	Specific Measures	Responsible Party	Scheduling	Measures carried out (Planning Phase)	Measures to be carried out (Construction Phase)	Comments
Stakeholder Engagement & Consent	Consultation & Documentation	Record key consultations on mitigation measures and decisions	SM Team, NbS Team, Irrigation Department	Planning & Implementation	Consultations conducted and minutes recorded (Apr–Jul 2025)	Only additional/critical consultations will be recorded	Avoids unnecessary meetings; ensures efficiency
	Consent Records	Obtain and maintain community consent	SM Team, NbS Team, CBOs, Irrigation Department	Planning & Implementation	Consent obtained during mobilization and ESS screening	Updated only if needed during implementation	Prevents repeated consent processes
	Terms of Partnership (ToP)	Define roles through formal agreement	SM Team, NbS Team, CBOs, Irrigation Department	July 2025	ToP signed with CBO	Implementation to be monitored as per ToP	Reduces need for repeated coordination
	Community Input Records	Capture and address key feedback and complaints	SM Team, CBOs, Irrigation Department	May–Dec 2026	Key inputs incorporated during planning	Feedback to be recorded only when relevant issues arise	Focus on actionable inputs only
	Community Awareness on Water Use	Inform community on water timings	SM Team, NbS Team, CBOs	May–June 2026		One-time awareness session; reminders if needed	Minimizes repeated engagement
	Pictorial Documentation	Maintain essential visual record	SM Team, NbS Team	May–Dec 2026	Baseline photos taken	Periodic photos at key milestones only	Avoids excessive documentation

Sector	Activities	Specific Measures	Responsible Party	Scheduling	Measures carried out (Planning Phase)	Measures to be carried out (Construction Phase)	Comments
Water Access Restoration	i. Orientation on Water Access Access Route Planning	i. Conduct awareness session on water access routes and usage Develop safe water access routes in consultation with CBOs and VOs	SM Team, NbS Team, Irrigation Department, CBOs	May 2026 – December 2026	i. Orientation sessions conducted and documented Access routes planned & shared with communities	Improves awareness and ensure safe and organized access	Water Access Restoration
	Controlled Pond Access	Allow controlled access to Badri Pond during non-working hours	CBOs, Irrigation Department, Contractor, SM & NbS Teams	Throughout construction period May to Dec 2026	Access managed and monitored for community and livestock	Prevents conflict and ensures safety	
	Construction Management & Safety	Brief community and contractors on safe construction practices and avoid unplanned excavation	Contractor, SM Team, NbS Team, CBOs	Throughout construction period May to Dec 2026	Orientation and safety briefings conducted & documented	Supports smooth implementation	
	Work Scheduling	Develop construction schedule in consultation with CBOs and follow safety protocols	Contractor, SM Team, NbS Team, Irrigation Department, CBOs	May 2026 – December 2026	Schedule implemented with community coordination	Minimizes disruption to community	

Meeting with Community Members – Badri Site | LRP & Risk Management Plan

Date: July 2nd, 2025

Purpose of Visit:

A joint field visit was conducted to the Badri site with Irrigation Department officials to discuss the Livelihood Restoration and Risk Management Plan. The primary objective was to assess potential livelihood impacts of the pond's restoration and desiltation, aimed at increasing its storage capacity to 20,000 cubic meters.

Historical Significance of the Pond:

Community elders shared that the pond predates independence and was traditionally used to store monsoon runoff from nearby hills. Before the advent of tube wells, this pond was the only water source for nearby villages including Ali Wanda, Aghzan Khel, Katta Khel, and Abulkhel. Even today, it remains vital for livestock and domestic use.

1. The pond has an overall length of 564 feet and a width of 329 feet, with an average standing water depth of approximately 4.5 ft, as per survey carried out in January 2026. This gives an existing storage capacity of around **9,405 cubic meters**.
2. The existing pond is used to serve the local population within a 3 km radius. Upon a house survey on Google Earth, approximately 100 houses were identified. Assuming an average household size of seven persons, the pond at gross storage levels can supply water for approximately 700 people for one year at a rate of 20 gallons per capita per day after detailed hydrological assessment of the site.
3. However, if the surrounding population is also taken into account, the pond will benefit approximately over **2,100 individuals**, primarily by supporting their domestic, livestock, and small-scale agricultural water needs at a rate of 6 gallons per day when the water in the pond is at gross level.

Community Concerns:

Residents highlighted that the pond is their primary source of water for both household and livestock needs. They expressed serious concerns over three consecutive years of inadequate water levels, which has forced seasonal migration due to scarcity.

Assurance & Mitigation Measures:

Community representatives were assured that the intervention is focused solely on ecological restoration and long-term benefits. It was mutually agreed that:

- De-siltation will proceed in phases.
- Access routes will be given at the inlet point.
- The pond receives its inlet flow from an upstream hill torrent (Kohe Khaisre), which is the primary source of water recharge. As per the community-agreed plan, a dedicated inlet channel will be constructed along the work section to facilitate the controlled diversion and storage of hill torrent water into the pond.
- Discharge volume of the torrent/Rainwater measured accurately. An embankment will be

constructed to divert the flow toward the pond to restrict the flow of water toward the natural downstream disposal path during peak overflow conditions.

- Furthermore, the pond and its inlet/outlet systems are designed to serve both upstream and downstream areas. The estimated total number of direct and indirect beneficiaries from the inlet and outlet flow systems is over 2,100 individuals, encompassing multiple communities dependent on this seasonal water source for domestic use, livestock, and small-scale irrigation.

Conclusion & Agreed Actions:

All stakeholders, including community members, the Irrigation Department, and WWF-Pakistan, committed that:

- No livelihoods will be adversely affected.
- Emergency water needs will be met through mechanical transfer to adjacent and existing storage tanks.
- Continuous community access to water will be ensured throughout the intervention.

02/07/2025

اقرار نامہ

برائے مانیگی ذخیرے کی بجالی Recharge Pakistan -

WWF - Pakistan کے تعاون سے

اسم ذیل دستی کوکنڈگان جو اس عہدے کے مقامی رہائشی ہیں۔ اقرار نامہ ہذا کے ذریعے

مندرجہ ذیل امور کی تصدیق کرتے ہیں۔

ہمارے عہدے میں موجود پانی کا تالاب (ذخیرہ آب) ہماری بنیادی ضروریات کی تکمیل

کا ذریعہ ہے جس سے نہ صرف ہم بلکہ ہمارے مریض بھی مستفید ہوتے ہیں۔

اس تالاب کی بجالی کا کام "ریچارج پاکستان - WWF پاکستان" کے اشتراک

سے عمل میں لایا جا رہا ہے۔ اس منصوبے کی تیاری ہماری، ریچارج پاکستان ٹیم لہ

عہدہ آبپاشی کا باہمی مشاورت سے کی گئی ہے۔

ہم اس منصوبے کی مکمل حمایت کرتے ہیں اور اقرار کرتے ہیں کہ

عہدہ آبپاشی، ریچارج پاکستان ٹیم، اور ہم مقامی افراد باہمی تعاون سے اس منصوبے

کو مکمل کریں گے۔

تالاب کے ساتھ موجود پانی کے بڑے سٹینک (Reservoir) کو بھی استعمال کیا جائیگا لہ

اور ضرورت ہوگی تو اس کو قابل استعمال بنایا جائیگا۔ اسکی capacity تقریباً 100000 گالون ہے۔

لیکن ہے۔ کام میں تعلق کی روک تھام کیلئے لہروں کو پانی کی فراہمی کیلئے اس کو استعمال میں لایا جائیگا

منصوبے کا ڈیزائن لہر نقسہ ہماری باہمی مشاورت سے ترتیب دیا گیا ہے تاکہ انسانی اور

موسموں کی ضروریات پوری کی جاسکیں۔

ہم اس بات کے یقین رکھتے ہیں کہ:

منصوبے کی تکمیل تک عہدہ آبپاشی، ریچارج پاکستان ٹیم اور کارکنان سے مکمل تعاون کریں گے۔

کسی قسم کی رکاوٹ یا ذاتی مفاد کو منصوبے کی راہ میں حائل نہیں ہونے دیں گے۔

یاتی کو ایک اجتماعی امانت سمجھتے ہوئے اس کے مساری اور منصوبہ استعمال کو یقینی بنایا جائیگا۔
 یہم اس منصوبے کو عدالت کی پائیدار ترقی اور آبی وسائل کے تحفظ کے لئے ایک اہم قدم سمجھتے ہیں۔
 یہم اس منصوبے کو عدالت کی پائیدار ترقی اور آبی وسائل کے تحفظ کے لئے ایک اہم قدم سمجھتے ہیں۔
 یہم اس اقرار نامہ پر دستخط کر کے مندرجہ بالا تمام نکات کو تسلیم کرتے ہیں اور وعدہ کرتے ہیں
 کہ یہم اس منصوبے کی کامیابی کے لئے اپنا ذمہ داری کو بخوبی نبھائیں گے۔

دستخط کنندگان

نام والد شناختی کارڈ نمبر

رشتہ حقائق
 محمد علی محمد زویالی
 گل نواز واندہ علی
 محمد زویالی
 عنایت اللہ خان محمد زویالی

1- محمد عمران شہر خٹا

2- گل نواز شاہ نواز

3- محمد میراب محمد امیر

4- عنایت اللہ خان کریم خان

5- عزیز بخان لندن

6- احمد نواز غلام حیدر خان

7- مشتاق خان دین محمد

8- ولی خان امیر بخان

9- شاہ پیر خان فور خان

10- اب نواز میر بخان

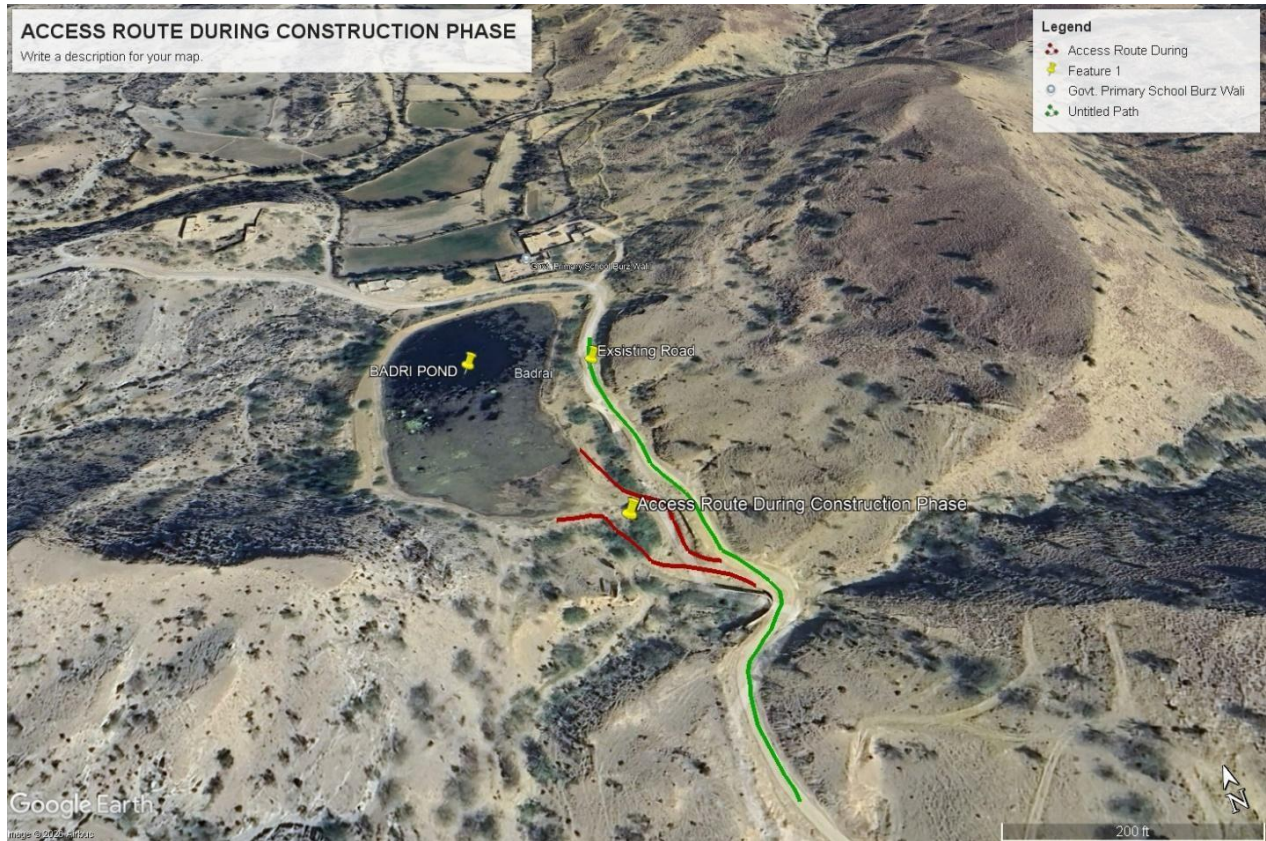
11- علی محمد روبر

نظام سیم
 محمد زویالی
 Muhammad Zahid Zoyaali
 Coordinator NBS SWS
 WWA - Pakistan, Bhal

Sub Engineer
 Migration
 Division
 1242-6358779-5
 عزیز بخان

واندہ علی

Work Execution Plan as Agreed





Latitude: 32.329744
Longitude: 71.135505
Elevation: 602.96±12.0 m
Accuracy: 8.692 m
Time: 07-02-2025 11:07

Powered by NoteCam



Time: 07-02-2025 11:06

Powered by NoteCam





Latitude: 32.328848
Longitude: 71.133972
Elevation: 567.43±16.0 m
Accuracy: 6.955 m
Time: 07-02-2025 09:58

Powered by NoteCam



Latitude: 32.327709
Longitude: 71.134291
Elevation: 601.81±8.0 m
Accuracy: 7.934 m
Time: 07-02-2025 10:02

Powered by NoteCam

