



Reference # **GSK/016/2026**

REQUEST FOR PROPOSAL FOR “DESIGNING, INSTALLATION, OPERATION AND MAINTENANCE OF A SOLAR POWERED REVERSE OSMOSIS DRINKING WATER FILTRATION PLANT IN AZAM BASTI, MEHMOODABAD, KARACHI”.

UNDER THE PROJECT

‘BUILDING WATER-SENSITIVE SOCIETIES: COLLABORATIVE SOLUTIONS FOR FRESHWATER RESILIENCE AND SUSTAINABILITY’

1. INTRODUCTION:

WWF-Pakistan under National Competitive Bidding (“NCB”) requires the services of one qualified vendor / contractor to provide services for the designing, installation, operation, and maintenance of a solar powered reverse osmosis (RO) based drinking water filtration plant at Azam Basti, Mehmoodabad, Karachi complete in all respects in accordance with the attached drawings, BOQs and specifications.

2. SCOPE OF WORK:

The Scope of work generally includes the **Designing, Installation, Operation and Maintenance of a Solar Powered Reverse Osmosis Drinking Water Filtration Plant** at a polytechnic institute located in Azam Basti, Mehmoodabad, Karachi, covering all aspects **regarding the installation and commissioning of the plant, solar power system and civil works**. All works must be completed as per the technical specifications mentioned in the **Bill of Quantities (BoQs)** attached as **Annexure-A** within the agreed timeline between WWF-Pakistan and the vendor / contractor.

3. SUBMISSION OF BIDS:

Bidder shall submit the Technical and Financial Proposal in Single Sealed Envelope having mentioned following:

- Clearly Mention Title of Procurement on Sealed Envelope: **Designing, Installation, Operation and Maintenance of a Solar Powered Reverse Osmosis Drinking Water Filtration Plant in Azam Basti, Mehmoodabad, Karachi.**
- Purchaser Address as mentioned in 3.3

3.1 Only one rate should be quoted for the item, and a bidder must avoid giving any alternate quote.

3.2 Quotation must be typed or written in indelible ink and should be signed by an authorized representative. Without a signature on Form of Quotation, the quotation shall not be considered further. All pages of the submitted quotation(s) where entries or amendments have been made, should be signed or initialed by the person signing the quotation.

3.3 A bidder shall submit Price Quotation, on their letterhead, duly signed, stamped by hand on Sealed envelope. The quotation should be addressed and delivered to the following official named official at the address mentioned underneath:

Name: Assad Ullah
Designation: Head of Procurement and Consultancies
Purchaser’s Address : World Wide Fund for Nature,
Inside Ali Institute of Education, Ferozepur Road Lahore
P.O Box 5180
Telephone : 042-5465983

For any queries, please write To: Syed Ali Larosh Zaidi at salzaidi@wwf.org.pk & cc: Assad Ullah assadullah@wwf.org.pk, Mehak Sikander msikandar@wwf.org.pk



2.4. The quotation (s) should reach to authorized official at the address indicated hereinabove, by or before **13th June, 2026.**

4. REQUIREMENTS:

The bidder should have a proper business address and office besides complying with the following eligibility requirements through documentary evidence, to be submitted along with their Proposal:

- a. Registration with FBR and a valid NTN number.
- b. Should have experience of completing a minimum of 4 Water Filtration Plants Projects.
- c. Must be a PEC registered firm.
- d. Should be able to follow all the required Health, Safety and Environmental (HSE) protocols, as specified under the WWF-Pakistan HSE safeguard policy.
- e. Should be able to comply with all the national and provincial labour laws.

5. ADDITIONAL DOCUMENTATIONS AND PROPOSAL SUBMISSION REQUIREMENTS:

Following documents are required to be submitted with the proposal and would be used for Technical/ Financial Evaluation:

- a. Covering Letter on company's letterhead.
- b. Technical proposal with detailed Technical Specifications and Details of all components and items in line with the requirements mentioned in the Annexure-A.
- c. Financial proposal with unit rates and total cost of work (Cost must be inclusive of all taxes). Financial proposal needs to be submitted on the format provided at Annexure-A.
- d. Company Profile with relevant work experience details and completed projects.
- e. Copy of valid NTN certificate and PEC registration certificate.
- f. Copy of valid Sales Tax Registration Certificate (if applicable).
- g. Details of Brand/Leaflets/Broachers of major components and items.

6. DELIVERABLES:

- Completing the designing, installation and commissioning of Reverse Osmosis Plant under the supervision of qualified engineers within due time as agreed with WWF-Pakistan. The plant shall have a minimum capacity of 417 GPH.
- Completing the arrangements for the delivery and storage of product water to an overhead water tank.
- Completing the Solar Electric Power work for powering the RO plant, and other water supply pumps.
- Procurement of all components/materials and delivery at site.
- Completing all associated plumbing, civil and electric works.
- Submission of product water quality analysis report by a reputed and certified laboratory complying with the drinking water NEQS.



**WORLD WIDE FUND FOR NATURE
HEAD OFFICE, FERROZEPUR ROAD LAHORE**

- Operation & Maintenance of the RO Plant for a period of 12 months from the date of commissioning, Ensure regular supply of consumables and filters for a period of 12 months for the operation of the RO plant and provision of O&M training to the designated staff of the facility.
- Following Health, Safety and Environment (HSE) SOPs.

7. FEED WATER QUALITY AT SITE:

- The Plant needs to be designed on the basis of Feed Water TDS of **6,000 mg/L**.

8. Validity of Bids:

Bids shall remain valid for a period of at least **60 days** from the date of submission of the quotation, which may be extended based on mutual discussion. A bid valid for a shorter period may be considered as nonresponsive.

9. Purchaser Right:

9.1 WWF-Pakistan reserves the right to accept or reject any bid, and to annul the bidding process and reject all bids at any time prior to contract award, without thereby incurring any liability to the affected Bidder or bidders. The Purchaser will inform the affected Bidder or bidders of the grounds for the Purchaser's action, if so requested, but the Purchaser shall not be required to justify the grounds.

9.2 Any bidder, if found engaged in corrupt or fraudulent practices (including collusion/polling) will be declared ineligible either indefinitely or for a stated period of time.

9.3 WWF-Pakistan also reserves the right to increase, decrease, delete or modify quantity to be delivered before the issuance of "Purchase/Supply Order" to the "Lowest Evaluated Bidder."

Regards,
Syed Ali Larosh Zaidi
Coordinator Freshwater Programme

ANNEXURE-A

BOQs for the Designing, Installation, Operation and Maintenance of A Solar Powered Reverse Osmosis Drinking Water Filtration Plant In Azam Basti, Mehmoodabad, Karachi.

S.No	Item Description	Unit	Quantity	Unit Rates without Taxes	Amount without Taxes
RO PLANT COMPONENTS					
1	Stainless Steel skid with roller wheels for mounting RO plant	No.	1		
2	High pressure vertical multistage pump of minimum 2,800 LPH flow capacity – CNP pump with warranty	No.	1		
3	Feed water pump of minimum 2,800 LPH flow capacity (CNP pump with warranty)	No.	1		
4	Multimedia (Anthracite + Quartz Sand + Garnet 30x40 + Garnet 8x12 + Gravel) filter with minimum 2.8 m ³ /hr flow rate and filled in a 16” x 65” FRP Vessel (Lenntech / Pentair)	No.	1		
5	Granular Activated Carbon + Pyrolox filter media with minimum 2.8 m ³ /hr flow rate and filled in 16” x 65” FRP Vessel (Lenntech / Pentair)	No.	1		
6	Cartridge filter of maximum 5-micron pore size with polypropylene cover / vessel (Dupont / Filmtec)	Set	2		
7	An Automatic System for dosage of necessary chemicals (antiscalant, disinfectant, pH adjustment)	Set	1		
8	Reverse Osmosis Membrane 08” x 40” (Dupont / LG Chem / Koch) with Fiberglass pressure vessel end-port housing	Set	1		
9	Disinfection system UV based (Lenntech / Pentair) with piping and complete in all respects	Set	1		
10	An automated system for dosing necessary nutrients/minerals (Milton Roy or Seko)	Set	1		
11	Backwashing and Clean-In-Place (CIP) system (Deyi or Hilge Durietaa) of minimum capacity of 100 liters	Set	1		
12	High Pressure UPVC Lines and Control Valves	Set	1		
13	Pressure gauges for feed and reject lines (Wika / Rosemount)	No.	4		
14	In-Line digital TDS monitoring equipment (ADWA / HANNA / SUNHO)	No.	1		



S.No	Item Description	Unit	Quantity	Unit Rates without Taxes	Amount without Taxes
Tanks and Other Components					
15	Construction of Storage Tank Foundations				
(i)	Raised foundations for feed and product water storage tanks of minimum dimension of 65" x 44" x 9" (horizontal RCC Slabs with each with 4 vertical RCC columns each of height 6 ft), including oil paint works, complete in all respects	Job	2		
(ii)	Construction of foundations for feed and product water storage tanks of minimum dimension of 4' x 4' x 2'	Job	2		
16	PE tanks (Horizontal Loft or Cylindrical Triple layered Food Grade – Master Tank / Pak Arab / Equivalent Brand with a capacity of 1,000 Liters) (FEED TANK)	No.	2		
17	PE tanks (Vertical Cylindrical Triple layered Food Grade – Master Tank / Pak Arab / Equivalent Brand with a capacity of 1,600 Liters) (PRODUCT TANKS)	No.	2		
18	Portable TDS meter (HANNA) – HI 98302	No.	1		
Water Connections					
19	Feed Water Connection Works:	Rft	100		
	Laying 25 mm PPR pipes (10 Bar) by excavating a 1.5' x 1.5' trench over 100 ft length, including cutting in the existing area and jointing, 24-hour pressure testing, backfilling, compaction, and refixing of concrete pavers. Work covers connection from the bore water pump to the feedwater tank in the RO Plant room, with valve installation for future maintenance. All works to be completed as per specifications and WWF Engineer's approval.				
20	R.O Product Water supply to Overhead Water Storage Tank:	Job	1		
	The work includes supply, installation, and commissioning of a water transfer system from the product water storage tank to the overhead water storage tank, including excavation up to 2 feet deep and 2 feet wide over 450 feet, proper backfilling with sand, warning tape, and surface restoration including refixing of pavers. A 3 HP new Leo/Javed horizontal multistage pump (30–55 m head, 6–15 m ³ /h flow) with 3-phase motor and starter panel will be supplied and installed. The system includes 450 feet of 63-mm HDPE (PN10) pipe with all required fittings, pipe supports, a 2" foot valve, NRV, pressure gauge, and power cable. Final testing and commissioning are included.				



**WORLD WIDE FUND FOR NATURE
HEAD OFFICE, FERROZPUR ROAD LAHORE**

S.No	Item Description	Unit	Quantity	Unit Rates without Taxes	Amount without Taxes
Electrical Work					
21	Solar Panels, Tier 1, A Grade, Mono Crystalline PV Modules N Type 580 Watts Each (Jinko / LONGI / Canadian)	No.	18		
22	Solar Hybrid Inverter (Inverex) 6 KW with 2 years warranty and IP 65 rating	No.	2		
23	Installation of MS PV Frame epoxy coated for mounting the Solar Panels, Customized Elevated Structure H beam, Must withstand 40 m/s wind speed	No.	1		
24	Other Components of Solar Power System:	Lumpsum	1		
	AC and DC Distribution Boxes for Inverter (2 Numbers)				
	DC Cable, 4mm 2 layered, tin coated copper XLPO (Fast / Pakistan Cables) for connecting PV Modules to the Inverter (Distance from PV Modules to Inverter is 225 ft approx.)				
	DC Surge Protection Device (SPD), 500 V, 40 kA (Noark / Chint) (4 Numbers)				
	AC Surge Protection Device (SPD), 230 V, 2 Pole 40 kA (Chint / CNC) (1 Number)				
	DC Breaker for Strings, 25 Amp (Chint / CNC) (4 Numbers)				
	AC Breaker for Input , 2 Pole, 63 Amp (Chint / CNC) (2 Numbers)				
	AC Breaker for Output, 2 Pole 63 Amp (Chint / CNC) (4 Numbers)				
	AC Change Over, 2 Pole 63 Amp (Chint / CNC) (2 Numbers)				
	AC Cable for connecting Inverter to AC Distribution Box , 1 core 10mm (Fast / Pakistan Cables) (30 ft approx)				
	AC Cable for Underground electric connection of bore well submersible pump with solar power system: 2 core 55mm 7/44 cable (150 Rft) with laying underground inside a PVC conduit and including all necessary fittings, connectors and switch boards board and to Bore Water Submersible Pump				
	PV Conduits, Flexible Pipes, MC4, Bends, Sockets, Thimbles etc				

S.No	Item Description	Unit	Quantity	Unit Rates without Taxes	Amount without Taxes
	<p>Separate Earthing Bores for Lightning Arrestor, AC and DC systems. Bore depth atleast 60 ft / until reaching water table, with three earth pits. Usage of 10mm bare Copper Conductor with a minimum 99% copper purity ensuring an earth resistance of less than 5 ohms as per NEPRA guidelines (3 bores for earthing)</p> <p>Lightning Arrestor with Air Termination and 99% pure Copper, air termination and rod length shall be calculated on the basis of rolling sphere method complying with IEC 62305-3</p> <p>Provision and Installation of batteries for power back up for solar power system: 130 Ah Batteries – Lead-Acid – 21 Plates per Cell (Alaska / AGS / Exide / Osaka / Equivalent brand) with Copper Cables (5 ft each, 8 AWG or 10 mm²), Tinned Copper Terminals (2nos. for each battery), wooden rack for batteries placement and Installation complete in all respects.</p> <p>Construction of Concrete Foundation for Solar Panel MS Frame Foots: Construction of Cylindrical shaped foundation for the foots of MS Solar Panel Frame (12" Dia and 12" in height)</p>				
Plant Room / Hydrant and Other Works					
25	<p>Excavation Excavation for foundation, footing of columns, retaining walls plinth beams etc. in all kinds of soil including layout of building and maintaining suitable control points, backfilling with suitable soil, compaction up to 95% dry density, watering, leveling, dressing and disposal of surplus material outside the project limits in accordance with the local authorities requirements, complete in all respects as per drawings, specifications and to the approval of the Engineer. Excavator Excavation up to any depth upto ----- or as shown on drawings.</p>	Cft	422		
26	<p>Backfill with selected granular material received from excavation around foundations and footings upto ----- or as shown on drawing.</p>	Cft	510		
27	<p>Disposal of Surplus Excavated Soil from site</p>	Cft	203		



**WORLD WIDE FUND FOR NATURE
HEAD OFFICE, FERROZPUR ROAD LAHORE**

S.No	Item Description	Unit	Quantity	Unit Rates without Taxes	Amount without Taxes
28	FILLING, COMPACTION AND TESTING Supplying and filling with suitable soil in layers not exceeding 8" in thickness in depressions, around retaining walls, under floors, footing of columns, etc. with selected granular material having minimum value of CBR 6 and maximum Plasticity Index of size (6) as determined by AASHTO T89 and T90, leveling, dressing, watering and compacting up to 95% modified AASHTO dry density and disposal of surplus excavated materials out side or within the premises, complete in all respects as per drawings, specifications and to the approval of the Engineer and Local Authority's requirements complete in all respect as per specifications and to approval of the Engineer.				
(ii)	Compaction	Sft	646		
(iii)	70% local sand and 30% gravel or Brick balast	Cft	162		
29	TERMITE CONTROL Providing and applying Anti termite by using "FIPROKILL", "Salyer 25SC", "MIRAJ 5% SC by Ali Akbar", or approved equivalent termite proofing chemical, mixed with water in ratio as per manufacturers specifications, at the bottom at site of columns foundations, trenches before laying of PCC 1:4:8. The Contractor Will be Required To Furnished 10-Years Grantee Of the Termite Proofing Works.	Sft	646		
30	STEEL REINFORCEMENT Providing fabricating and laying deformed steel reinforcement bars by Amreli Steel, or approved equivalent confirming to ASTM-A-615, with granted minimum yield stress of 414N/mm ² (60,000 Psi) reinforcement for cement concrete including cutting, bending, laying in position, making joints and fastenings, including cost of binding wire labor charges for binding of steel reinforcement (also include removal of rust). Providing and fixing of steel Dowels drilling in columns, beams and others structures Up to 9 inches deep using Confix AG High Strength Epoxy grout make by Radiant Construction Technologies or approved equivalent as per specification and depth of drilling as per drawing. In B.F , G.F & F.F				
(i)	#3 dia	Kg	790		
(ii)	#4 dia				

S.No	Item Description	Unit	Quantity	Unit Rates without Taxes	Amount without Taxes
31	CAST IN PLACE CONCRETE Providing, mixing, laying and compacting plain cement concrete having minimum cylinder compressive strength as specified below at 28 days under foundations, grade slab and walls at any level, using Ordinary Portland Cement, local Chenab sand from approved sources and crush of nominal size 1 inch including curing, necessary water tight form work, complete in all respects, as shown on drawings, specifications and all to the approval of the Engineer.				
(i)	PCC 1:2:4 Under in Foundation slab as shown on drawings	Cft	86		
(ii)	PCC 1:4:8 Under in Foundation slab as shown on drawings.	Cft	162		
32	R.C.C (1:2:4) Providing, mixing, laying, vibrating and curing water tight reinforced cement concrete with minimum compressive cylinder strength of 4000 PSI at 28 days at any height /floor using Ordinary Portland Cement (Sand consisting of 100% Lawrencepur, Margalla crushed stone ¾ inches down – by volume) including the cost of water tight form work and approved admixture @ ()Kg per bag of cement but excluding the cost of reinforcing steel, complete in all respects as shown on drawings, specifications and all to the approval of the Engineer. Ditto of above item # 2.2 , 2.3 but for 3750 PSI minimum compressive cylinder strength at 28 days (mixed by weight batching plant)	Cft	525		
33	BRICK UNIT MASONRY Providing and laying, including cost of materials labor and equipment, first-class solid burnt brick masonry in super structure in cement sand mortar (gray cement : Chenab sand - mixed <i>by volume</i>) including cost of materials, scaffolding, labor, curing, cleaning, raking out joints, and extra labor for making of openings, arches etc. and fixing of all types and Dias. of pipes, complete in all respects at any floor and any height as per drawings and specifications, and to the approval of the Engineer.				
(i)	(9") inches Thick Walls in 1:5 Cement Sand Mortar at any Floor or Height	Cft	761		
(ii)	First class brick tiles clad by laying tiles with polythine and mud in stretcher This item is to be executed only course in cement sand mortar 1:4	Sft	196		

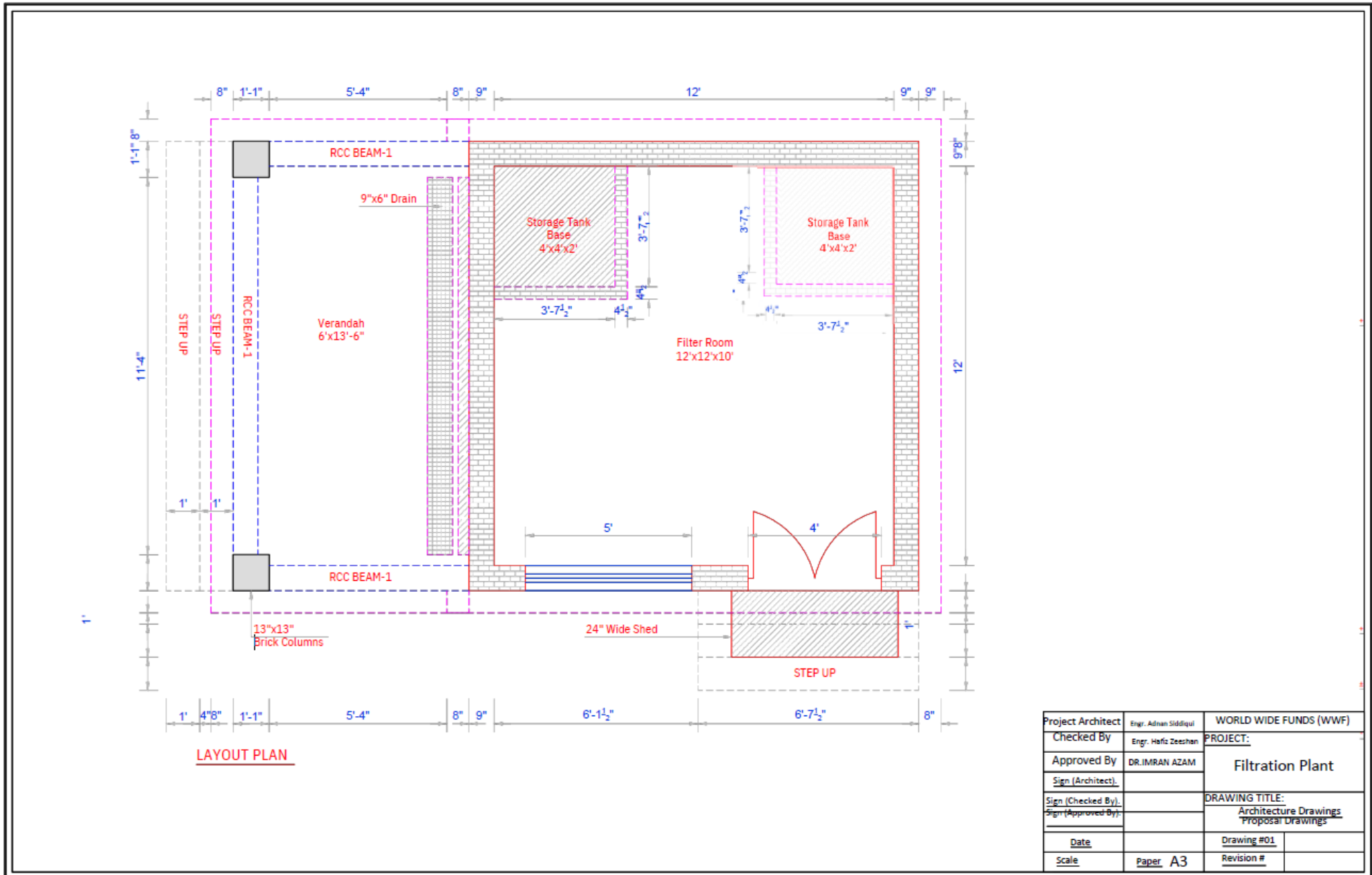
S.No	Item Description	Unit	Quantity	Unit Rates without Taxes	Amount without Taxes
(iii)	Floor Ceramic Tile Size: As per approved sample/drawing (standard sizes include 300x300mm, 600x600mm,300x600mm etc.) Thickness: 8mm–12mm (as specified) Make/Brand: New Times / Master or approved equivalent Shade & Pattern: As per architect/client's approvalcourse in cement & tile fixing bond mortar 1:4 for bedding Spread mortar evenly (thickness: approx. 20–25 mm) Lay tiles with uniform joints (2–3 mm width typical) Use spacers to ensure alignment and leveling tap with rubber mallet for proper bonding First class Floor tiles clad by laying tiles in stretcher This item is to be executed only (1800/sq.m) and to the approval of the Engineer.	sft	529		
34	Khaprail (12"x12") High-quality terracotta clay OR cement-sand mix Smooth top surface, natural reddish terracotta or pigmented as specified 12 inches' x 12 inches (±2 mm tolerance) > 15 N/mm ² (for cement-based tiles) Straight, machine-cut or mold-pressed, Used on sloped roofs (with proper slope and waterproofing layer underneath) Lay Khaprail tiles with 1:3 cement mortar bed (10–15 mm thick) Maintain 3–5 mm joint gaps for thermal movement. Fill joints with waterproof grout or pigmented cement slurry. complete as shown on drawings, Specifications and approval of the Engineer.	Sft	425		
35	Marble Providing and laying fair face Gutka cladding laid in (1:2) cement / red posso mortar having 1/4" thick groove finish i/c cost of 8 SWG wire in shape of 8 placed horizontally and vertically at 36" and 18" c/c respectively i/c cutting charges as per approved drawing including ornamental works, excluding carriage charges complete in all respect as approved and directed by the Engineer Incharge. (2-1/4" x 2-1/4" x 9" by STiles)	Sft	198		
36	Paint Work Providing and applying 2 caots of weathershield/ Plastic emulsion paint, shade and manufacture over a coat of primer including preparing the surface to recive the painting for external walls at all levels with primer, Specifications and approval of the Engineer. Inner Side & Outer Sides	Sft	774		

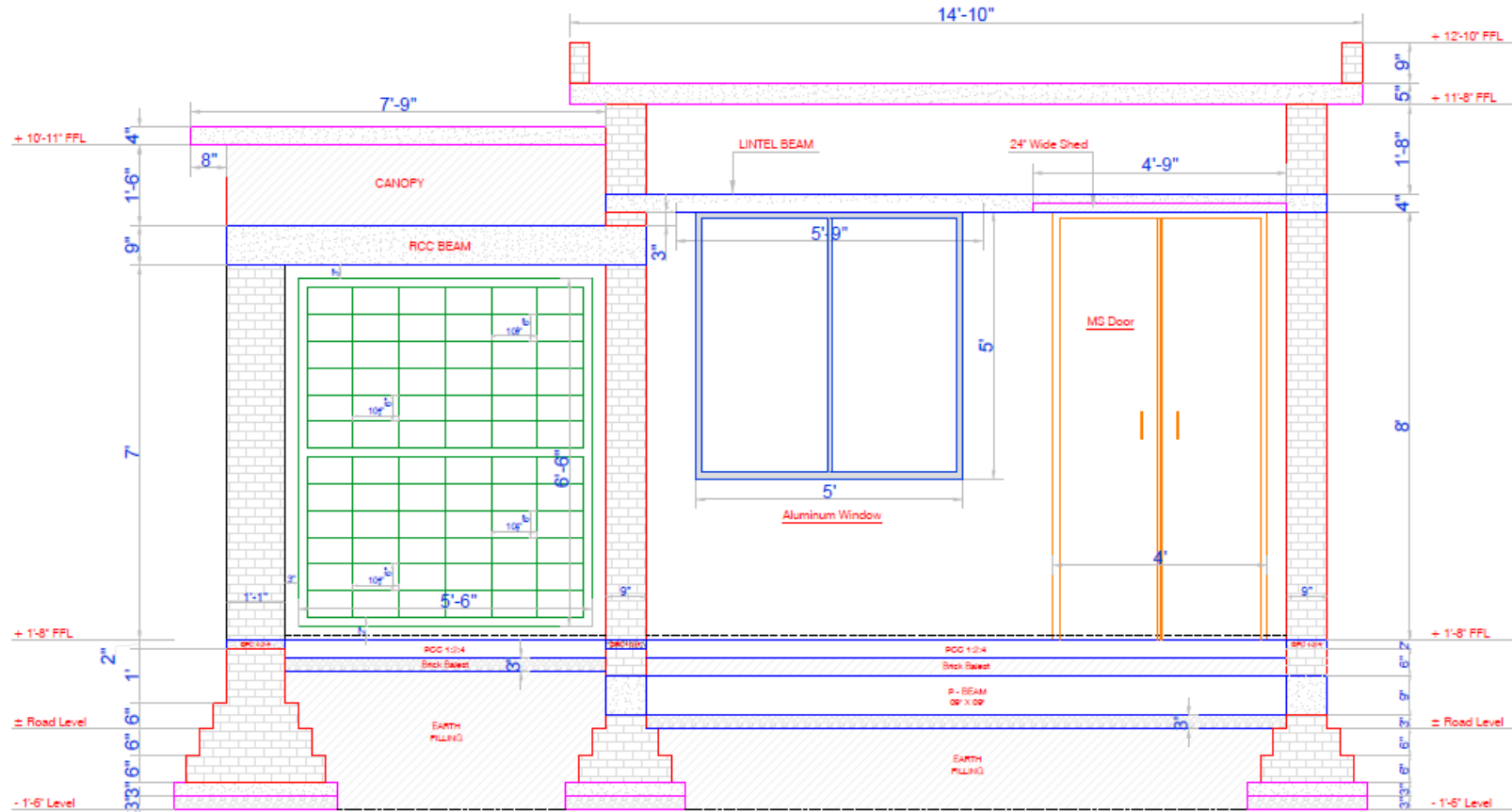
S.No	Item Description	Unit	Quantity	Unit Rates without Taxes	Amount without Taxes
37	Manhole Covers Supply, fabricate and install stainless steel sheeted man hole covers with frame conforming to ANSI Type 304, satin finished fabricated from 16 SWG sheet and 8 SWG frame including fittings and fixing accessories complete as shown on drawings, Specifications and approval of the Engineer. 24"x24" Internal dia Manhole Covers for Water Tanks (If Required)	No.	1		
38	PVC PIPE Providing, laying, cutting, jointing, testing and disinfecting UPVC / HDPE pipes line in trenches, with socket joints, complete in all respects.	Rft	13		
39	P/L MS Door with chokhte (4'x8') Providing and fixing M.S sheet hollow pressed frame of doors, windows, C. windows, etc. (chowkat only) of 18 SWG welded with M.S flat 6"x 1¼" x 1/8" (150mmx30mmx3mm) M.S holdfast 9"x1"x1/8" (225mmx25mmx3mm) welded/screwed 4" (100 mm) long iron hinges, including filling chowkat with cement sand mortar 1:8 and embedding holdfast in cement concrete 1:2:4, complete in all respects.	No.	1		
40	ALUMINIUM Window (5'x5') Providing and fixing all types of glazed aluminium windows of anodized champagne colour party fixed and party sliding using deluxe section of approved manufacturer having rame of size 100mm x 30mm using frame at bottom, at top and side leaf leaf frame sections of 60mm x 23mm at top & bottom and size 45mm x 25mm at center and size 43mm x 13mm i/c fine quality aluminium jali, 5mm thick imported tinted glass with ruber gasket using approved standard latches, wheel, stopper, brush channel angle Joint and hardware etc. complete in all respects.	No.	1		
41	Polyethylene (HDPE) bituminous membrane 2MM THICK Providing and laying bituminous damp proof course (DPC) membrane under walls / at plinth level / at locations shown on drawings, to prevent rising damp and moisture penetration, complete in all respects. Single Coat Inner side & Double Coat Outer side Wall of Bitumin	Sft	41		

S.No	Item Description	Unit	Quantity	Unit Rates without Taxes	Amount without Taxes
42	PORTLAND CEMENT PLASTER Supplying and applying cement sand plaster on concrete or masonry surfaces, of a minimum thickness as specified below, using ordinary Portland cement sand machine mixed mortar and adding high strength polypropylene fiber in accordance with the written instruction of the manufacturers. Fixing of 1 mm thick metal lathe having 150 nets per m ² at all joints and MEP cut outs. Use G.I. corner beads at all corners and plaster stop beads as required. Scratching of under layers, toweling to a smooth final layer unless noted otherwise, including scaffolding, complete in all respects, in accordance with specifications as shown on drawings and to the approval of the Engineer.	Sft	1232		
43	<u>Floor trap with cover.</u>	No.	1		
44	<u>Electrification work including (light points, switch plates, bulb, circuit breaker including all connection)</u>	Lumpsum	1		
45	<u>Plumbing work including (drain pipe and rainwater pipe)</u>	Lumpsum	1		
46	Iron Saefty Grill MS Square Hollow Section (SHS) vertical posts 75x75x3mm, MS Horizontal Rails 50x50x3mm (2 Nos per panel) MS Vertical Bars 20x20mm @ 150mm c/c Gate fabrication (single/double leaf, lockable) Surface Painting with 2 coats enamel paint (black/grey) preparation and red oxide primer coat Miscellaneous fittings and hardware (bolts, fasteners, welding rods, etc.) in accordance with specifications as shown on drawings and to the approval of the Engineer.	Lumpsum	1		
47	<u>MS Mesh 18 SWG (12'x6")</u>	No.	1		
48	<u>Exhaust Fan (12"x12") Royal/SK Fans.</u>	No.	1		
49	<u>Ceiling Fan (G.F.C/ SK/Pak fans)</u>	No.	1		
50	<u>Out Side Wall Mounted Lamp lights</u>	No.	2		
Operation, Maintenance, Training and Compliance					
51	Provision of Services for the O&M of the RO Plant with regular supply of consumables and micro filters for the plant operation for a period of 12 months and provision of O&M training to the facility staff - Regular Water Testing to be conducted on quarterly basis by WWF-Pakistan.	Job	1		
52	Submission of Product water quality analysis report complying with drinking water quality standard at the time of completion of plant installation and commissioning.	Job	1		
Branding					
53	Acrylic plate of 2mm and dimension 8'x2' with specified logos and messages Wall mounted, complete with delivery & fixings in all aspects by the approvals of WWF Pakistan.	No.	2		



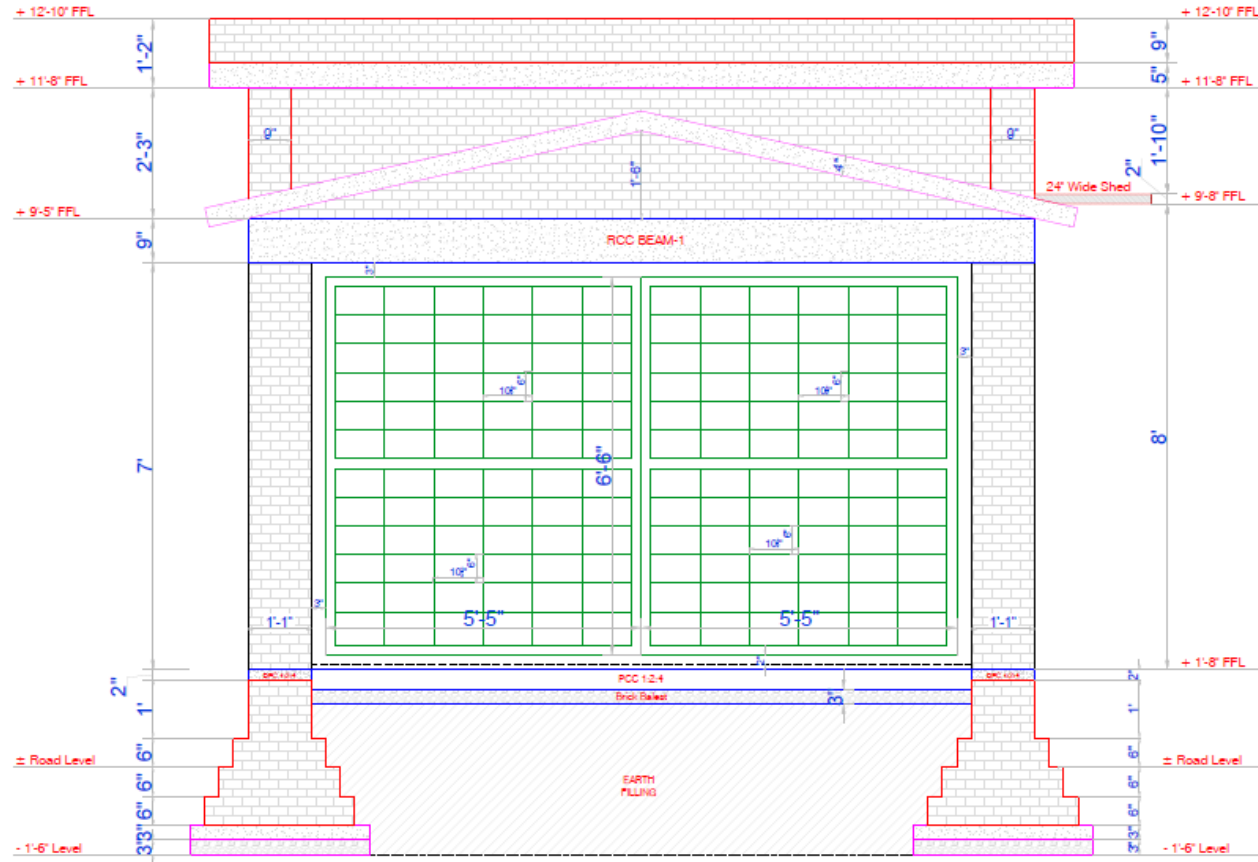
WORLD WIDE FUND FOR NATURE
 HEAD OFFICE, FEROPUR ROAD LAHORE





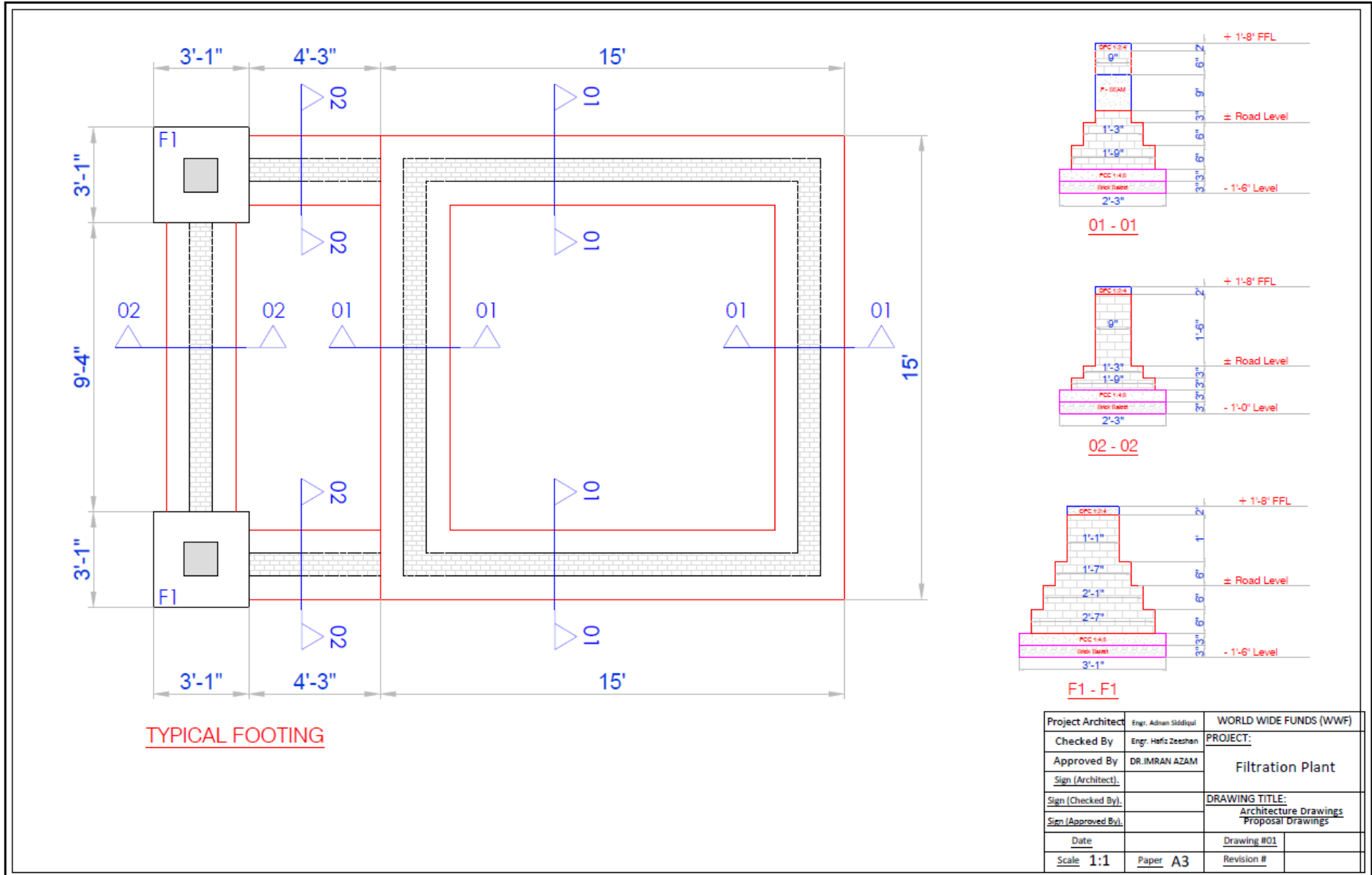
TYPICAL SECTION-1

Project Architect	Engr. Adnan Siddiqui	WORLD WIDE FUNDS (WWF)	
Checked By	Engr. Hafiz Zeeshan	PROJECT:	
Approved By	DR. IMRAN AZAM	Filtration Plant	
Sign (Architect)		DRAWING TITLE:	
Sign (Checked By)		Architecture Drawings	
Sign (Approved By)		Proposal Drawings	
Date		Drawing #01	
Scale 1:1	Paper A3	Revision #	

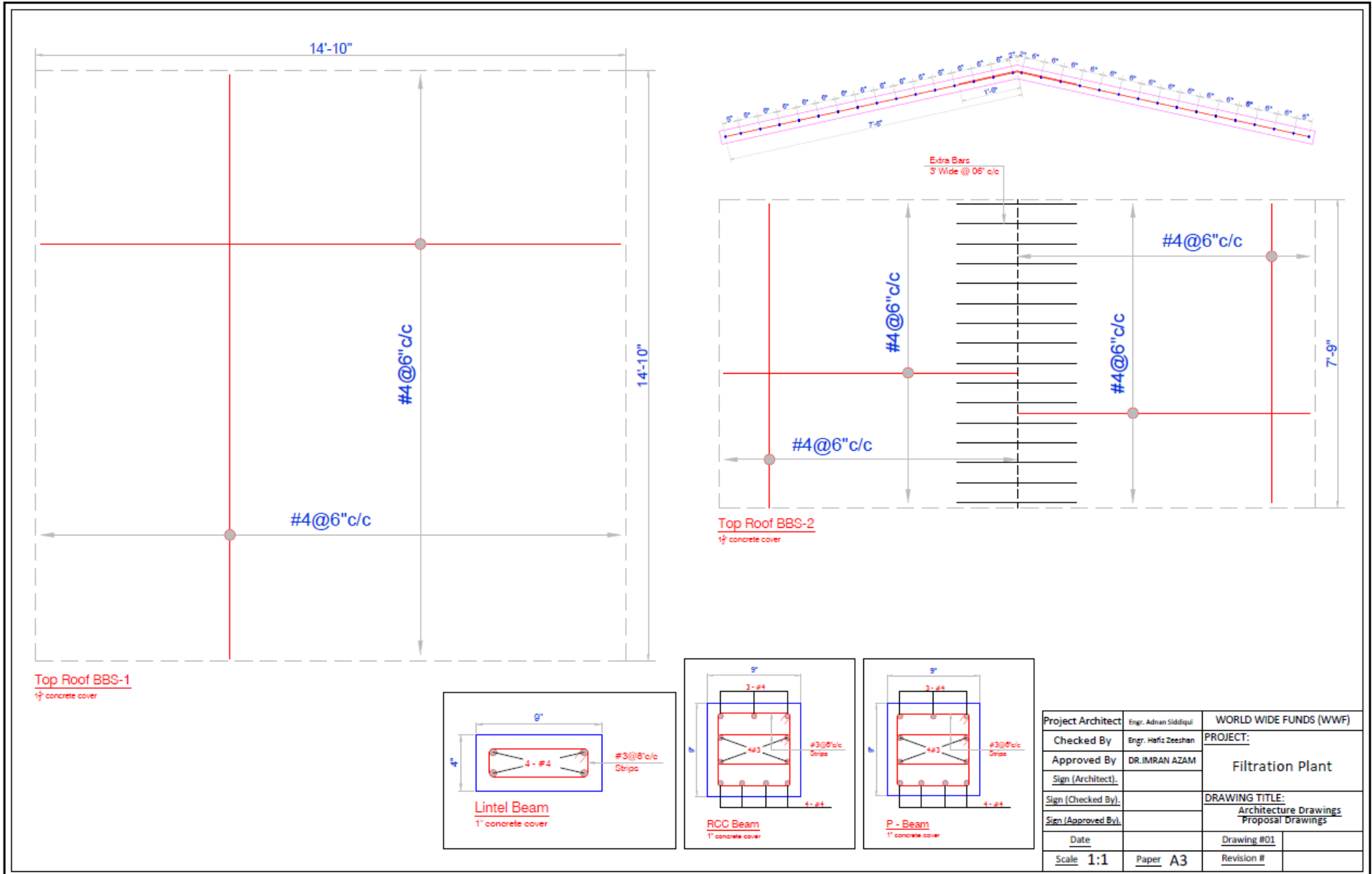


TYPICAL SECTION-2

Project Architect	Engr. Adnan Siddiqui	WORLD WIDE FUNDS (WWF)	
Checked By	Engr. Hafiz Zeeshan	PROJECT:	
Approved By	DR. IMRAN AZAM	Filtration Plant	
Sign (Architect)		DRAWING TITLE:	
Sign (Checked By)		Architecture Drawings	
Sign (Approved By)		Proposal Drawings	
Date		Drawing #01	
Scale 1:1	Paper A3	Revision #	



Project Architect	Engr. Adnan Siddiqui	WORLD WIDE FUNDS (WWF)	
Checked By	Engr. Hafiz Zeeshan	PROJECT:	
Approved By	DR. IMRAN AZAM	Filtration Plant	
Sign (Architect)			
Sign (Checked By)		DRAWING TITLE:	
Sign (Approved By)		Architecture Drawings Proposal Drawings	
Date		Drawing #01	
Scale 1:1	Paper A3	Revision #	





Notes:

- i- Delivery, Transportation and Installation at site shall be responsibility of the supplier.
- ii- The firms will ensure that the equipment being supplied is brand new and not refurbished
- iii- Bidder will be responsible for fault-free operations Purchaser Inspection committee will carry out the inspection of the items supplied. The decision of inspecting authority regarding approval or rejection of the items will be final and binding to all concerned.
- iv- The **O&M Period** of the Activity shall be **12 Months** against which the Supplier/Contractor shall provide FOC Services and Rectification if any and when required.
- v- **Delivery/Implementation Timelines** for this project is Approx **1 Month** from Signing of the agreement.

Format of Financial Proposal

i) Financial Proposal for required Goods/Services as per following details:

Sr. #	ITEMS	Unit	QUANTITIES	Unit Rate without Taxes	Total without Taxes
(i)	RO PLANT COMPONENTS	Nos	1		
(ii)	Tanks and Other Components	Nos	1		
(iii)	Water Connections	Nos	1		
(iv)	Electrical Work	Nos	1		
(v)	Plant Room / Hydrant and Other Works	Nos	1		
(vi)	Operation, Maintenance, Training and Compliance	Nos	1		
(vii)	Branding	Nos	1		
Grand Total Exclusive of All taxes					
Tax Amount					
Grand Total Inclusive of All taxes					

Payment Terms:

Following Payment, the terms shall be followed:

Advance Payment Upon Signing of Contract	25%
Upon Delivery of Construction Material at Site	10%
Upon Completion of Civil Works	25%
Upon Completion of All Works and Technical Inspection and submission of water testing report	35%
After Completion of 12 Months Defect and Liability Period	5%
"The contractor shall furnish a Performance Security in the form of an unconditional Bank Performance Guarantee equivalent to 10% of the contract price."	

- a) All payments are subject to submission of satisfactory inspection reports by WWF-Pakistan technical team.
- b) The Contracts request(s) for payment shall be made to the WWF-Pakistan in writing, accompanied by an invoice, and delivery challans/Inspection Reports describing, as appropriate, the Equipment delivered upon the fulfilment of other obligations stipulated in the Contract.
- c) The currency of payment is Pak. Rupees.



**WORLD WIDE FUND FOR NATURE
HEAD OFFICE, FERROZEPUR ROAD LAHORE**

- d) All Taxes shall be Deducted as per the Laws of Government of Pakistan
- e) If any Exemption on Taxes, Exemption Letter shall be provided along with the Financial Proposal.
- f) The payment terms are provisional/tentative and subject to revision by WWF-Pakistan at the time of contract execution.
- g) The selected vendor shall execute the vendor agreement on duly stamp paper.