



WWF-CAMBODIA: COUNTRY PROFILE

© Pha Sina / WWF-Cambodia

OUR MISSION & HISTORY

WWF-Cambodia's mission is to ensure **strong participation and support from all people in conserving the country's rich biodiversity**. By encouraging sustainable use of natural resources, WWF-Cambodia promotes new opportunities for all, enhances local livelihoods and contributes to poverty reduction.

Since its establishment in 1998, WWF-Cambodia has worked closely with other countries of the Greater Mekong – including Laos, Myanmar, Thailand and Viet Nam – to achieve our conservation goals.

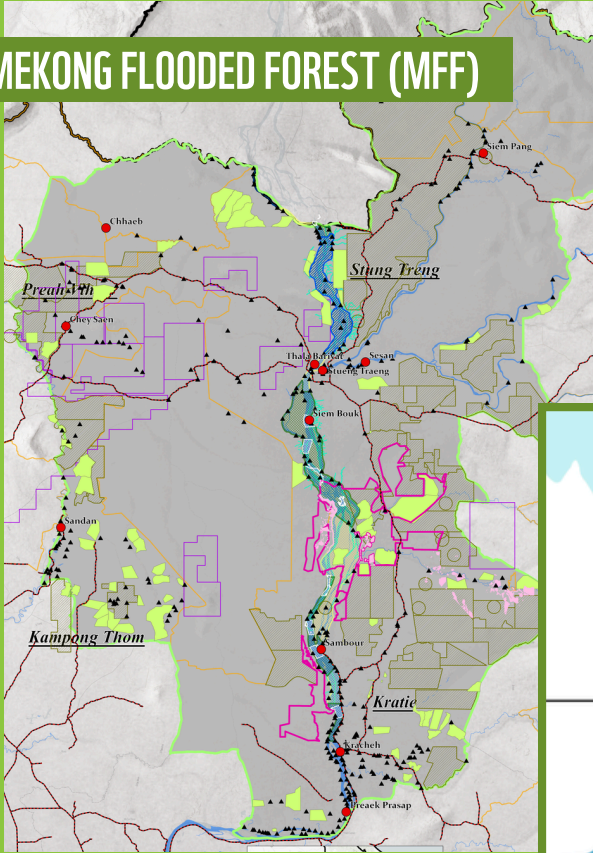


© Sophie Batty / WWF-Cambodia

WHERE WE WORK

Three of WWF's global ecoregions – areas of outstanding terrestrial, freshwater and marine habitats – are located in Cambodia. Through an interconnected landscape approach, WWF-Cambodia implements programmes in two primary areas, pictured below.

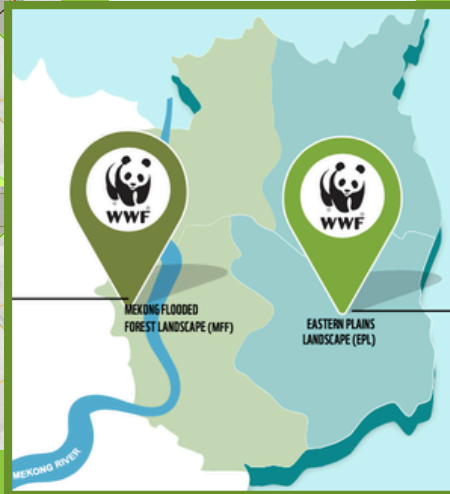
MEKONG FLOODED FOREST (MFF)



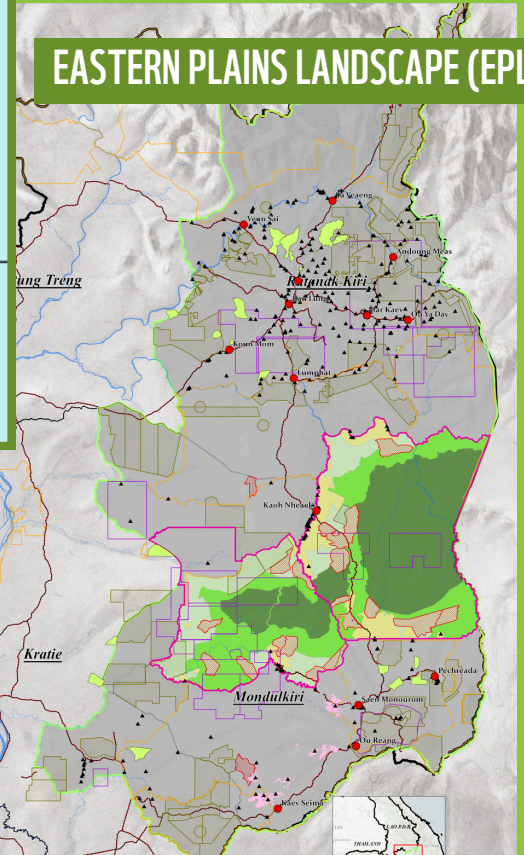
MEKONG FLOODED FOREST

Nourished by the Mekong River, this freshwater ecosystem is home to an astounding array of fish, bird and mammal species. The ever-changing floodplains are also a lifeline for Cambodian fishing and farming livelihoods.

- Stung Treng and Kratie provinces
- Sambo and Prek Prasab Wildlife Sanctuaries, Mekong River Dolphin Management Area



EASTERN PLAINS LANDSCAPE (EPL)



EASTERN PLAINS LANDSCAPE

This landscape contains semi-evergreen and dry forests rich with rare wildlife, particularly Asian elephants, Siamese crocodiles, banteng and Indochinese leopards. Indigenous and other local peoples rely on EPL's natural resources to thrive.

- Mondulkiri and Ratanakiri provinces
- Srepok and Phnom Prich Wildlife Sanctuaries



Scan here to learn more about our landscapes:



Mekong
Flooded
Forest



Eastern
Plains
Landscape



THREATS TO LANDSCAPES

Ecosystems across Cambodia are experiencing habitat degradation and wildlife population declines at alarming rates. We've identified the following factors as primary threats in our targeted landscapes:

OUR STRATEGY

Creating a sustainable future for Cambodia doesn't just mean restoring habitats and wildlife populations. It also means promoting sustainable livelihoods, using renewable energy and collaborating with all stakeholders.

That's why we have a range of current projects and initiatives focusing on Sustainable Consumption and Production (SCP), Indigenous land rights, ecotourism development, human-elephant coexistence, non-timber forest products and much more.

© Sothean Thou / WWF-Cambodia



This work would not possible without our generous donors, NGO partners and the Royal Government of Cambodia. We are profoundly thankful for their support.



Illegal logging and unplanned infrastructure development



Poaching and snaring



Climate change impacts



Difficulty engaging local communities



Hydropower on Mekong tributaries

OUR PROGRAMMING

Biodiversity Research and Monitoring

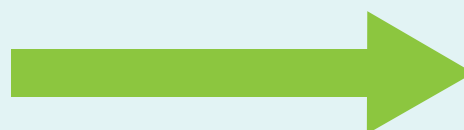
Community Empowerment

Protected Area Management and Law Enforcement

Partnerships with Civil Society Orgs

Policy Advocacy

Non-Hydro Renewable Energy Promotion



OUR GLOBAL GOALS

Zero Loss of Natural Habitats

Zero Extinction of Species

Cutting Our Carbon Footprint in Half

WWF-CAMBODIA IN NUMBERS

18%

Our 2025 census counted 298 white-shouldered ibises in Sambo Wildlife Sanctuary, a 18% increase from 2021.

28 years

WWF-Cambodia has been operating in the Greater Mekong for 28 years.



54

We aim to help 54 community-based organizations secure land tenure by 2030.

85

Our 2025 camera trap and drone study recorded 85 hog deer in Prek Prasab Wildlife Sanctuary – a species thought extinct until we rediscovered them in 2006.



Working to sustain the natural world for the benefit of people and wildlife.

together possible™ panda.org

© 2026
© 1986 Panda symbol WWF - World Wide Fund for Nature (Formerly World Wildlife Fund)
® "WWF" is a WWF Registered Trademark. WWF Avenue du Mont-Bland,
1196 Gland, Switzerland. Tel: +41 22 364 9111. Fax: +41 22 364 0332.

For contact details and further information, please visit our international website at www.panda.org